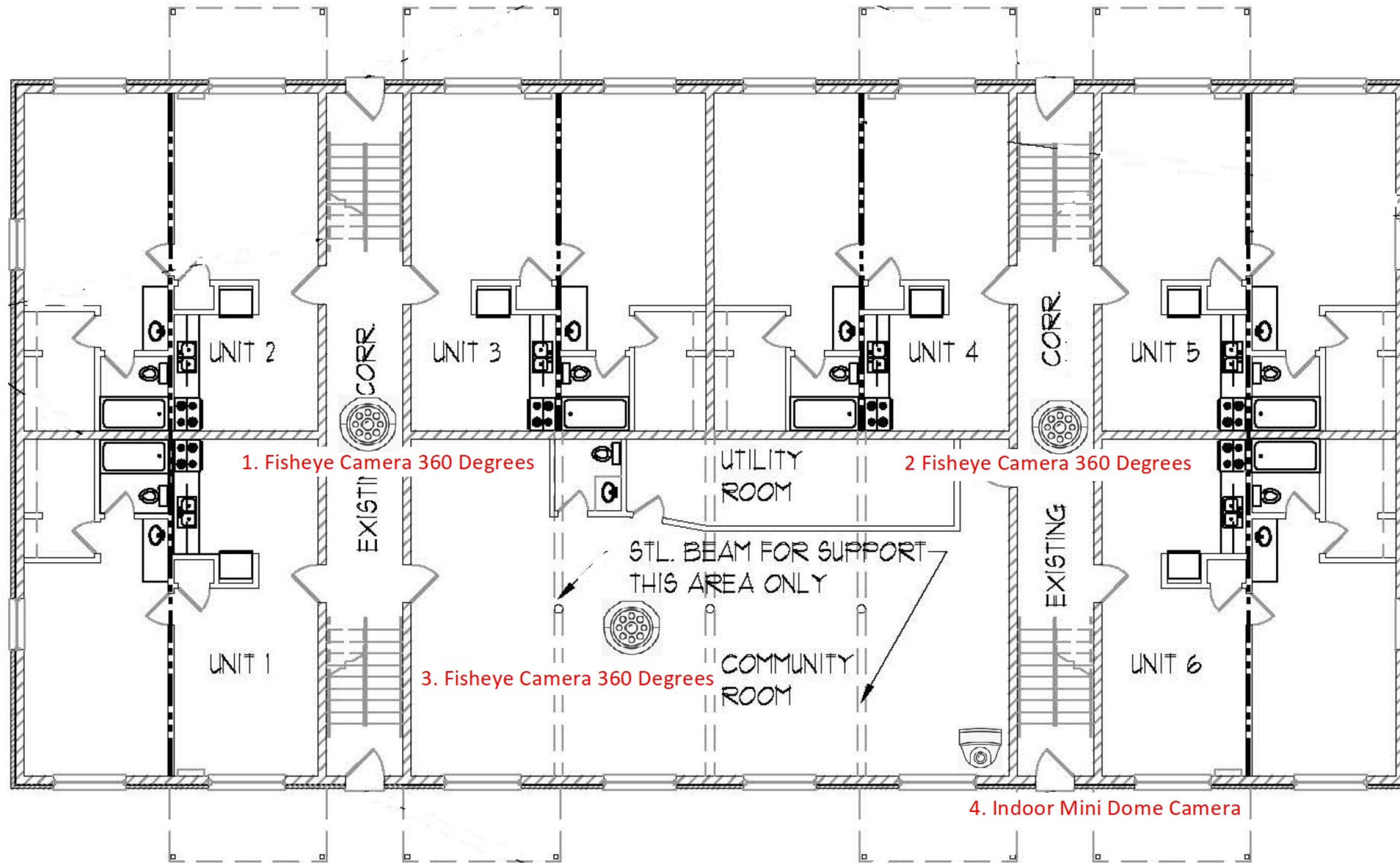


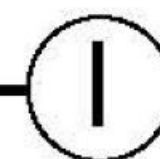
SCALE: 1/16" = 1'-0"

- Cameras
- 1. Fisheye Camera 360 Degrees
 - 2. Fisheye Camera 360 Degrees
 - 3. Fisheye Camera 360 Degrees
 - 4. Indoor Mini Dome Camera



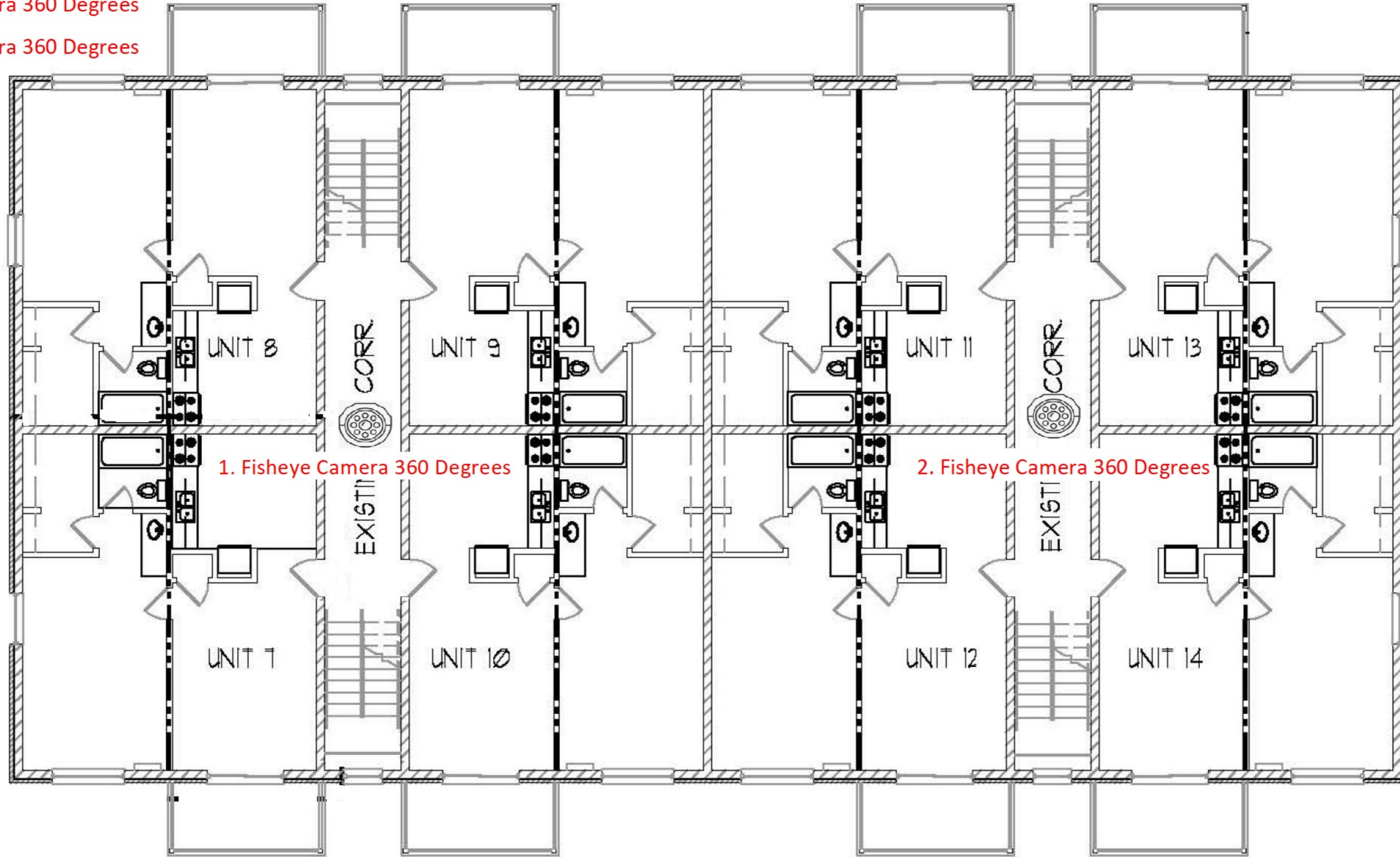
FIRST FLOOR PLAN

SCALE: 1/16" = 1'-0"



Cameras

- 1. Fisheye Camera 360 Degrees
- 2. Fisheye Camera 360 Degrees

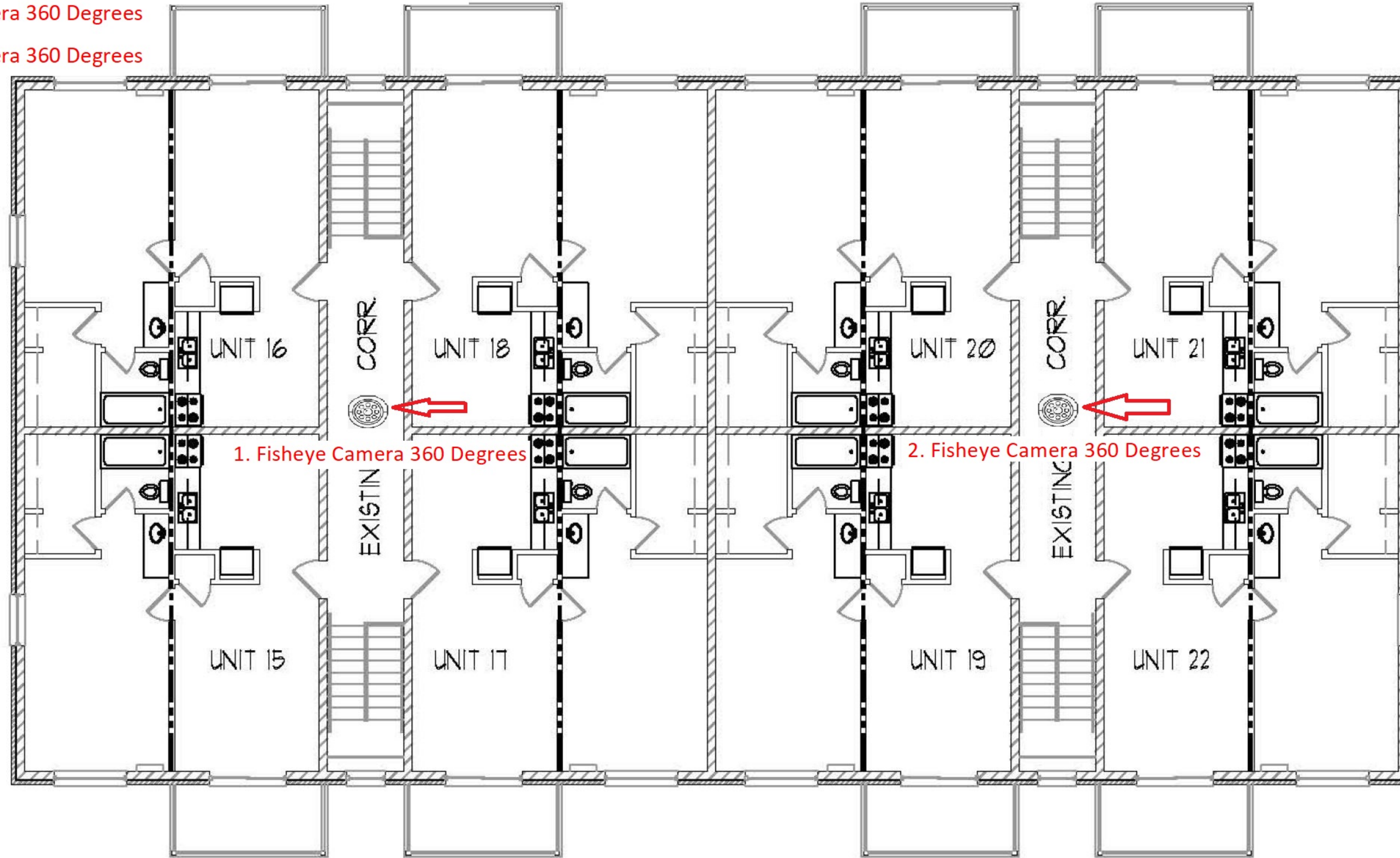


SECOND FLOOR PLAN

SCALE: 1/16" = 1'-0"

Cameras

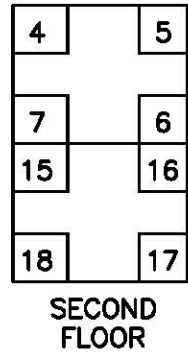
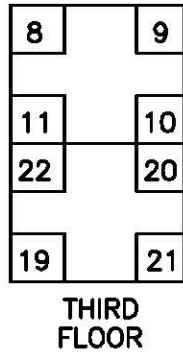
- 1. Fisheye Camera 360 Degrees
- 2. Fisheye Camera 360 Degrees



THIRD FLOOR PLAN

SCALE: 1/16" = 1'-0"

- Cameras
1. Fisheye Camera 360 Degrees
 2. Fisheye Camera 360 Degrees

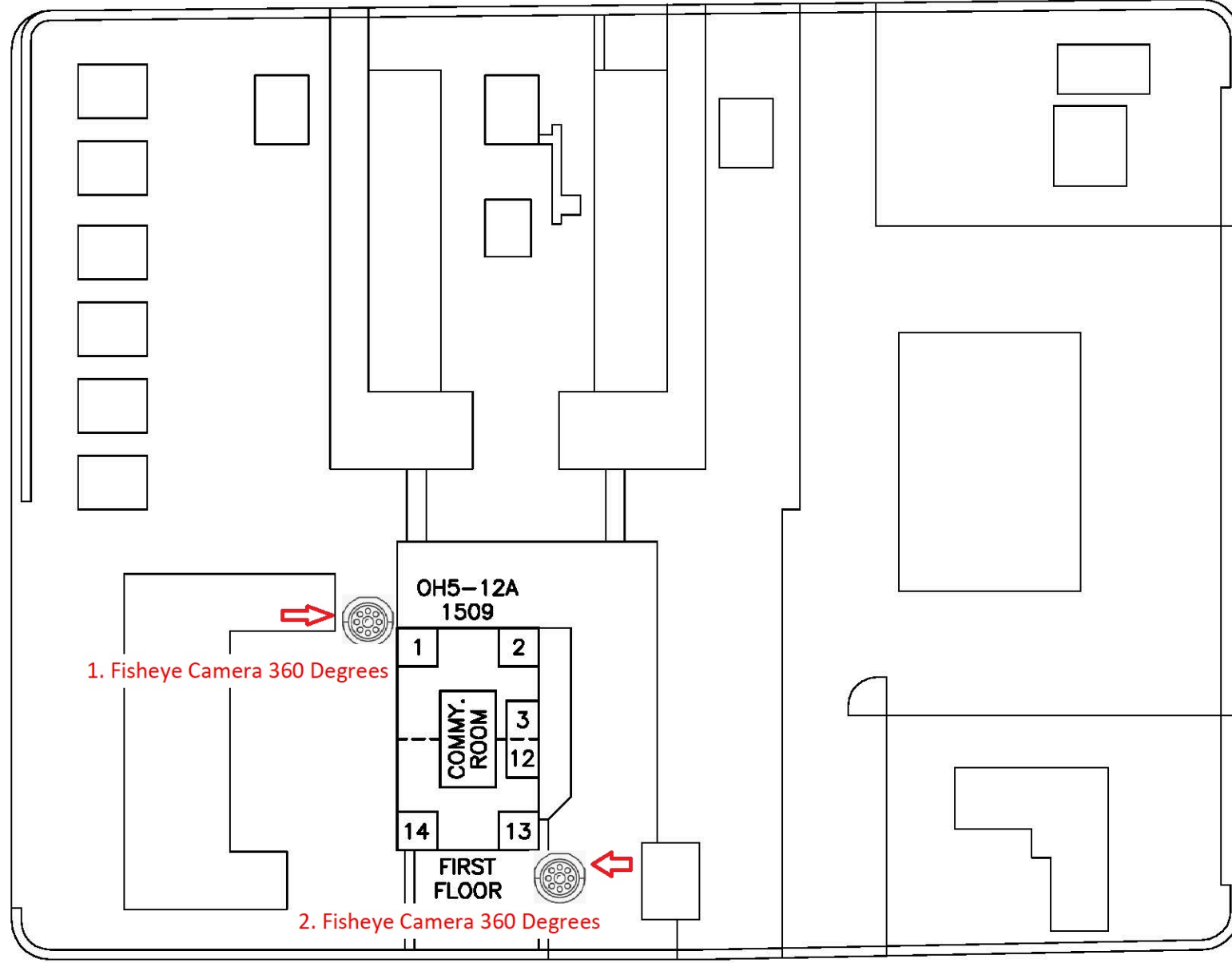


APTS. 1 THRU 22
1BR

ARGELLA AVENUE

ROSEMONT BOULEVARD

LINDEN AVENUE

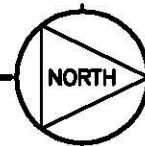


SOUTH SMITHVILLE ROAD

NOTE:
1-BUILDING (TOWNHOUSES)
22-UNITS (ELDERLY)

SITE PLAN

SCALE: 1" = 80'-0"



1509 S. SMITHVILLE RD.

OH5-12A
.67 ACRES
29,200 SQ. FT.

1509 South Smithville Road OH5-12A

1509 South Smithville Road

DATE
3-24-05

DRAWN BY

CHECKED BY

SHEET
M-2000